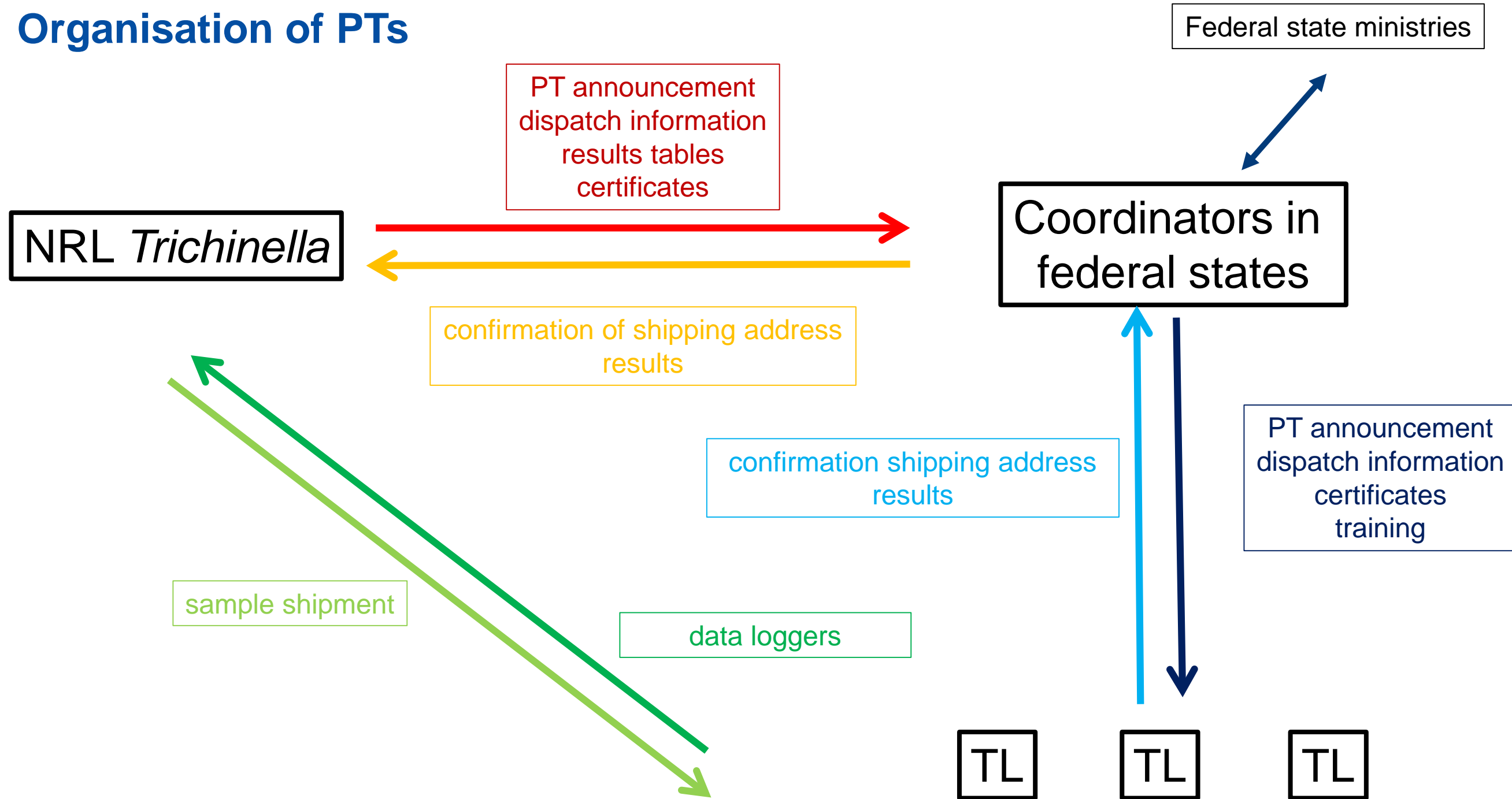




NRL *Trichinella* Germany PT 2020/21

Anne Mayer-Scholl, Nora Thaben, Peter Bahn, Sandy Kortebusch,
Josephine Markschies, Jana Sachsenröder, Annette Johne

Organisation of PTs



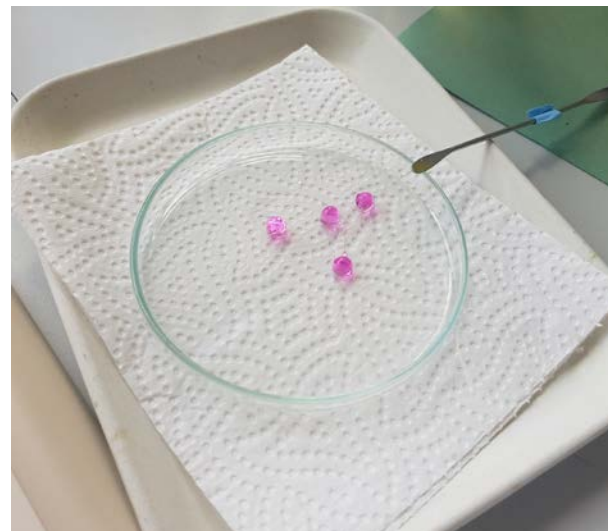
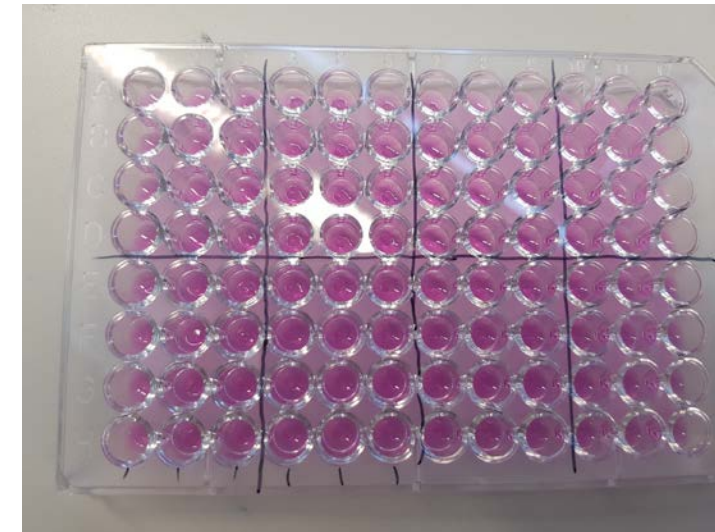
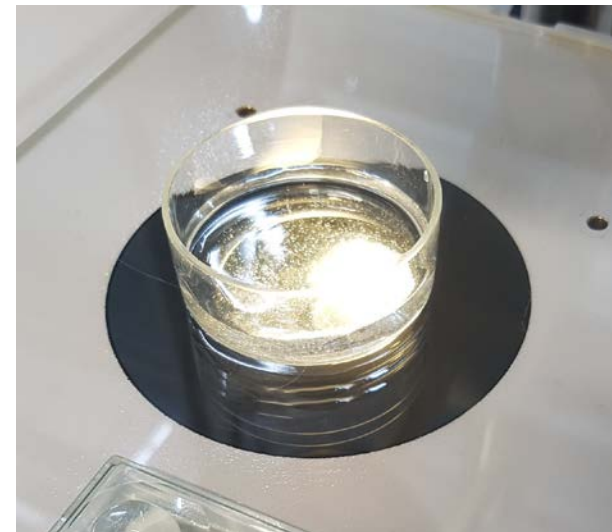
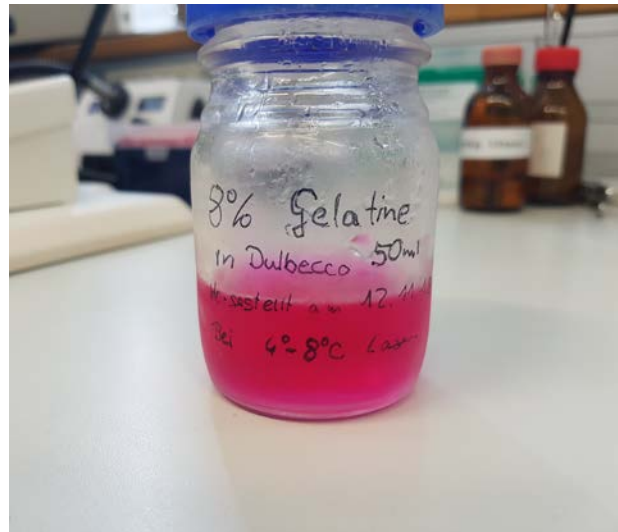
PTs NRL *Trichinella* Germany

- 646 TL coordinated by 43 coordinators
- Every TL must participate every second year
- 29 PT rounds including 6 repeater weeks in 2020/2021
- Between 25-30 participants/ round
- 4 samples/ PT negativ
 - low category: 3-4 larvae
 - middle category : 5-10 larvae
 - high category: 11-19 larvae

Reasons for failing

- Registration late
- Late submission of results
- One or more samples not tested
- False positive oder false negative results

Sample production

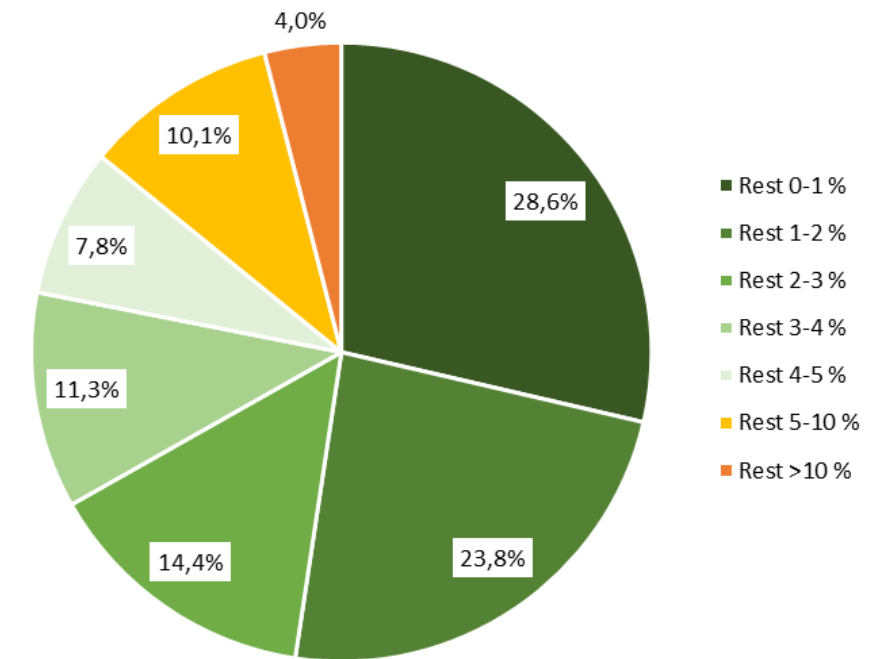


Samples and quality management for each round

- Larvae vitality checked every two weeks
- 3 different people verify number of larvae
- Random sample numbers
- For each round the number of larvae/ category varies
- Retention samples for every PT round
- Data loggers for temperature control during transport

Results

- 96% used reference method, > 3% Trichomatic, <1% PrioCheck
- 14% had >5% residue
- 84% identified all samples correctly
 - Group 1 (negative samples) 96% correct
 - Group 2 (3-4 larvae) 89% correct
 - Group 3 (5-10 larvae) 95% correct
 - Group 4 (> 10 larvae) 97% correct
- 16% TL failed first round, 18% of repeaters failed a second time
 - Two-time repeaters are trained by coordinators before they can repeat the PT



Thank you for your attention

Anne Mayer-Scholl



Identify Risks –
Protect Health

German Federal Institute for Risk Assessment

Max-Dohrn-Straße 8-10 • 10589 Berlin, GERMANY

Phone +49 30 - 184 12 - 0 • Fax +49 30 - 184 12 – 99 0 99

bfr@bfr.bund.de • www.bfr.bund.de/en