



INSTITUTE
OF TROPICAL
MEDICINE
ANTWERP

NRLT Belgium 2020 - 2022

WHAT DID WE DO?



In short

- Activities replaced, delayed or cancelled
 - During lockdown, no activities
 - Lab visits/audits replaced by checks of routine lab protocols (2020)
 - Yearly communication group replaced by newsletters (2020) or online meeting (2021)
 - Trainings for new lab technicians for a maximum of 2 participants, so extra trainings necessary
 - No *Trichinella* cases 2019 - 2021 (ASF) ; 1 in 2022 (not confirmed)
- More time to finish lingering publications!



Contents lists available at ScienceDirect

Veterinary Parasitology: Regional Studies and Reports

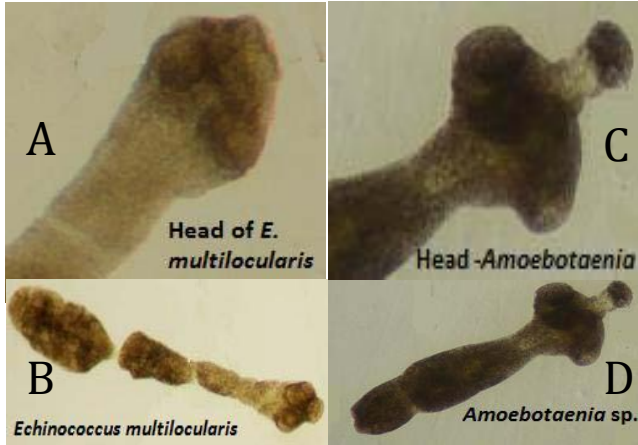
journal homepage: www.elsevier.com/locate/vprsr



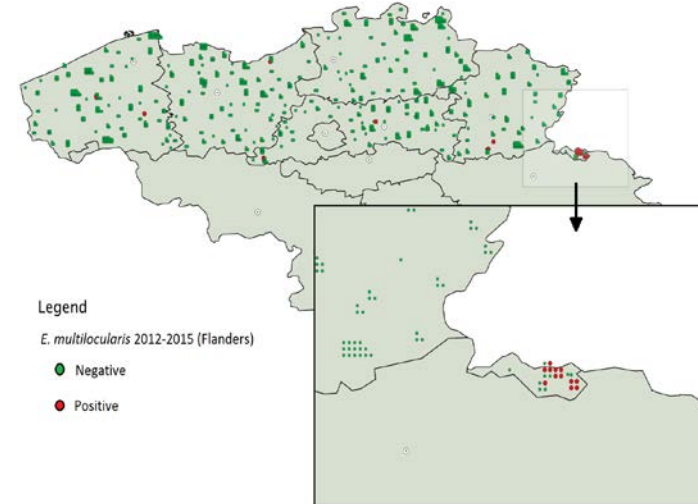
Short Communication

Echinococcus multilocularis in red foxes in North Belgium: Prevalence and trends in distribution

F. Jansen^{a,1,*}, M. Claes^{a,d,1}, E. Bakkers^a, A. Aryal^{a,e}, K.C. Madimba^{a,f}, S. Gabriël^{a,g}, V. Dermauw^a, A. Van Hul^a, M. Vervaeke^b, P. Dorny^{a,c}



■ Prevalence 2.1%



■ Upcoming project in Brussels (?)

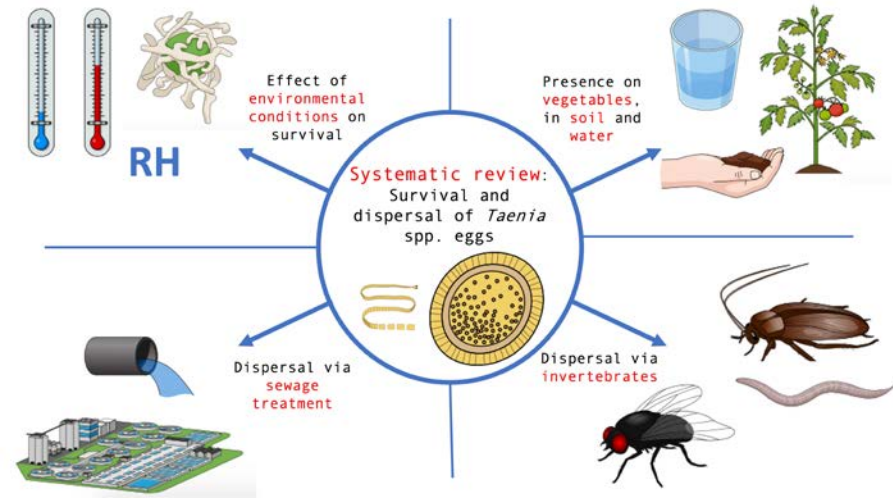


REVIEW

Open Access

The survival and dispersal of *Taenia* eggs in the environment: what are the implications for transmission? A systematic review

Famke Jansen^{1*}, Pierre Dorny¹, Sarah Gabriël², Veronique Dermauw¹, Maria Vang Johansen³ and Chiara Trevisan¹



- Data extracted from 93 papers
- Results e.g.:
 - Survival favored at moderate temperatures (0 – 20°C), more affected by humidity
 - Survival in field up to 1 year
 - Commonly found on vegetables (0.9 – 30%), in soil and water (0 – 43%)
 - Wastewater management systems are not capable of eliminating eggs entirely.

→ Information available, but old, focused on very specific geographic regions, focused on *Taenia* sp. that are safe to handle, doubtful results due to experimental setup

PT Belgium (every 2 years)

- 3 samples / package containing 0 or 3 – 6 larvae with capsule
- Accredited labs: 1 package
- Non-accredited labs: 1 package/technician

- 2021: 13 Belgian labs (incl. NRLT) + 2 foreign labs (LUX)
- 13 labs used reference method; 2 labs used latex agglutination method
- Criteria:
 - Negative = negative
 - Positive = positive

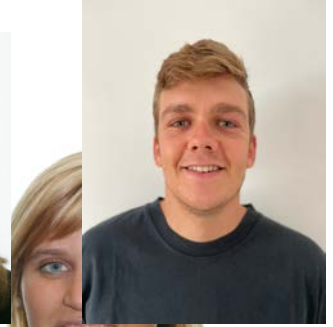
PT Belgium (every 2 years)

- Good quality samples: in 12 samples tested by NRLT, 100% of larvae were retrieved
- Results:
 - 11 Belgian labs correct results
 - 2 Belgian labs had a false positive result
 - 1 foreign lab had two false negative results
- Unsuccessful labs received information on how to act on the results and were invited to do a retake.
- All labs successfully passed retake
- In general: Belgian routine labs show consistent results for PT's, with high levels of larvae retrieved
- Future: validate technique using naked larvae



Big unit changes!

Prof. Dr. Pierre Dorny retired!



→ But of course, he will stay involved with NRLT

~~Unit of Veterinary Helminthology~~



~~Anke van Hul (16 years experience in NRLT/helminthology!)~~

Unit of Helminthology

Prof. Dr. Katja Polman

Lab technicians: Linda Paredis and Theo De Jong

Thank you!





**INSTITUTE
OF TROPICAL
MEDICINE
ANTWERP**