

The National Reference Laboratory for
Escherichia coli (NRL-E. coli) at the
Federal Institute for Risk Assessment
(BfR) in Berlin, Germany

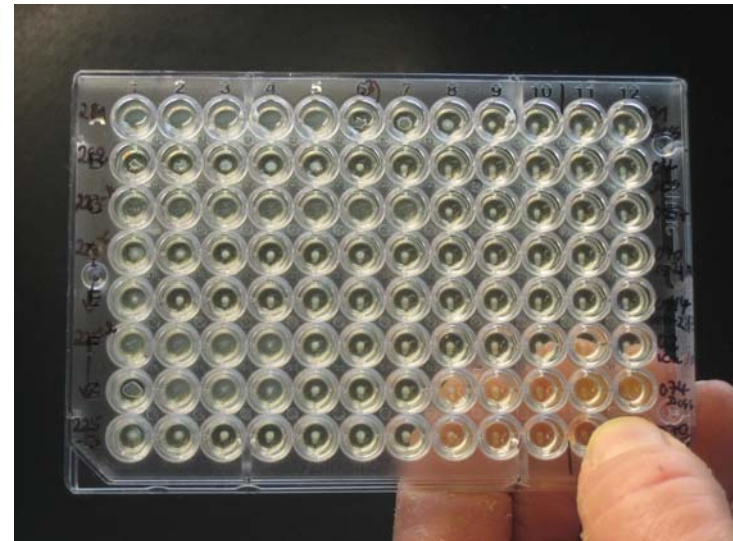
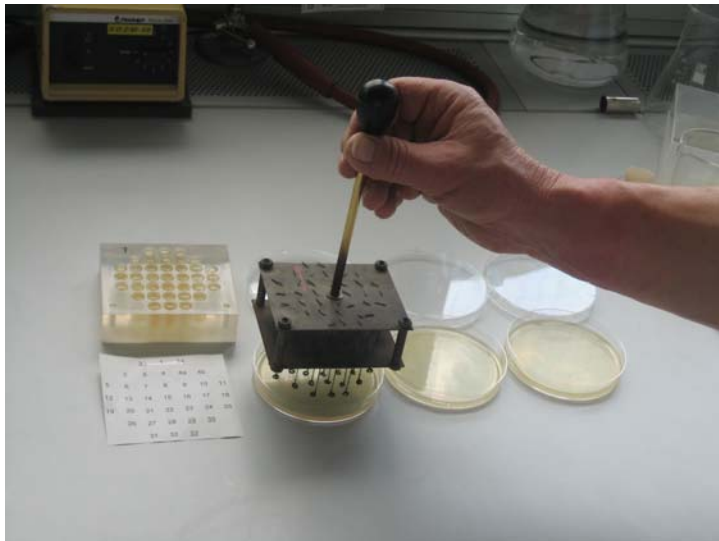
Presented by Lothar Beutin

Major tasks of the NRL-E. coli

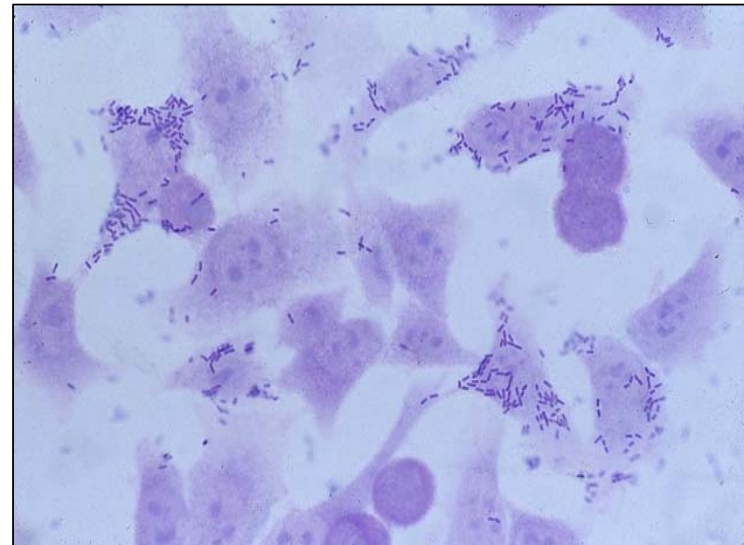
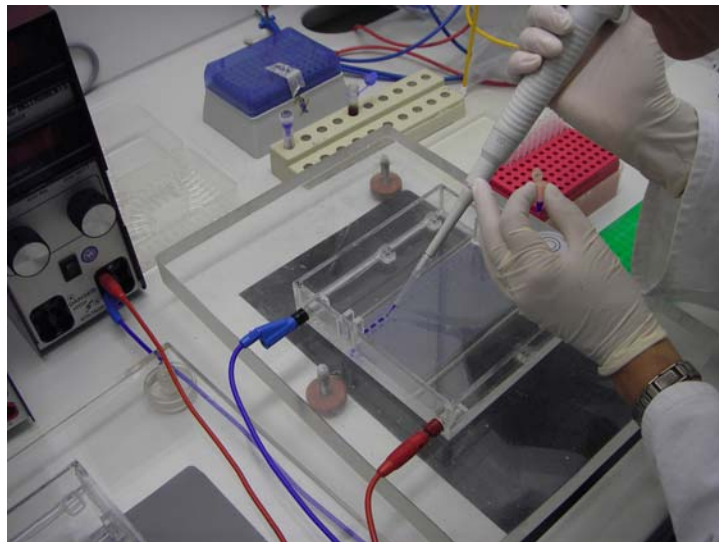
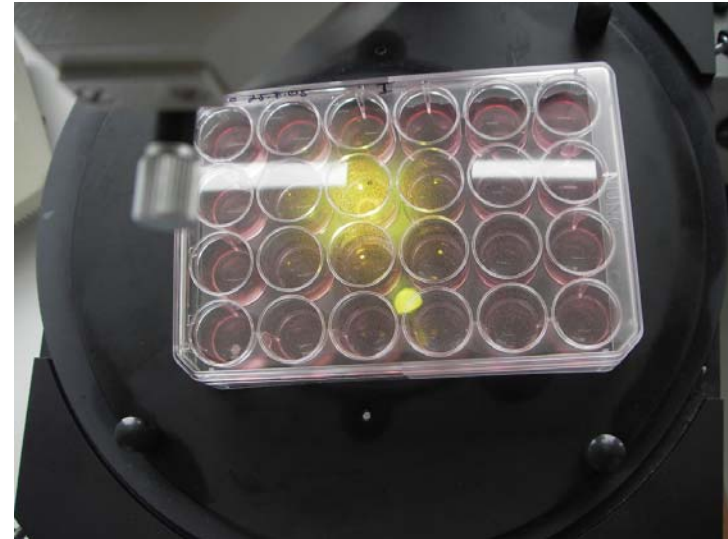


Detection, typing and research on STEC/VTEC and other types of animal and human pathogenic *E. coli* from different sources

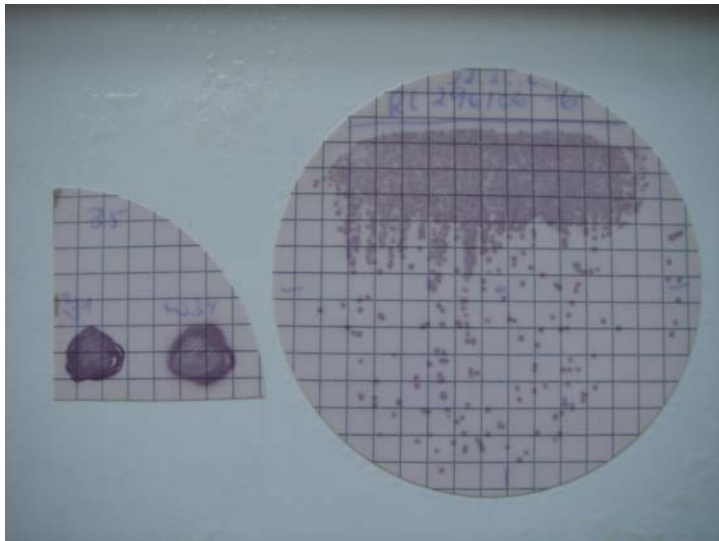
Identification of *E. coli* by biotyping, phagetyping, serotyping O-antigens O1-O181 & H-antigens H1-H56

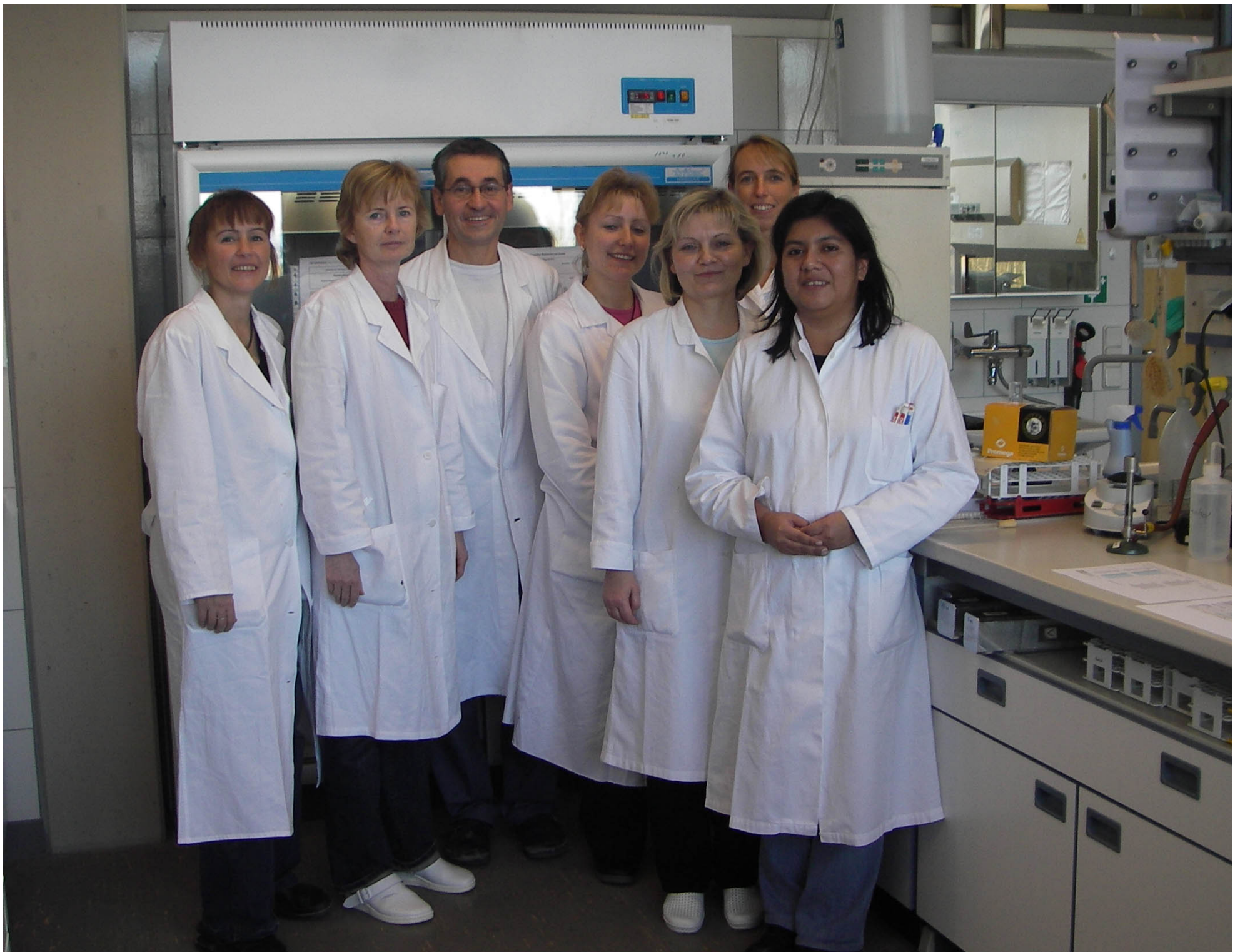


Detection of pathogenic E. coli: immunological, genetical and cytotoxicity and cell adherence assays



Isolation of VTEC/STEC from food





Sabine Haby, Karin Pries, Lothar Beutin, Nadine Albrecht, Angelika Miko, Katja Steege, Gladys Krause

Thank you for your attention



Federal Institute for Risk Assessment

National Reference Laboratory for Escherichia coli

Diedersdorfer Weg 1 • D-14195 Berlin

Tel. +49 30 - 84 12 22 59 • Fax +49 30 - 84 12 29 83

lothar.beutin@bfr.bund.de • www.bfr.bund.de