

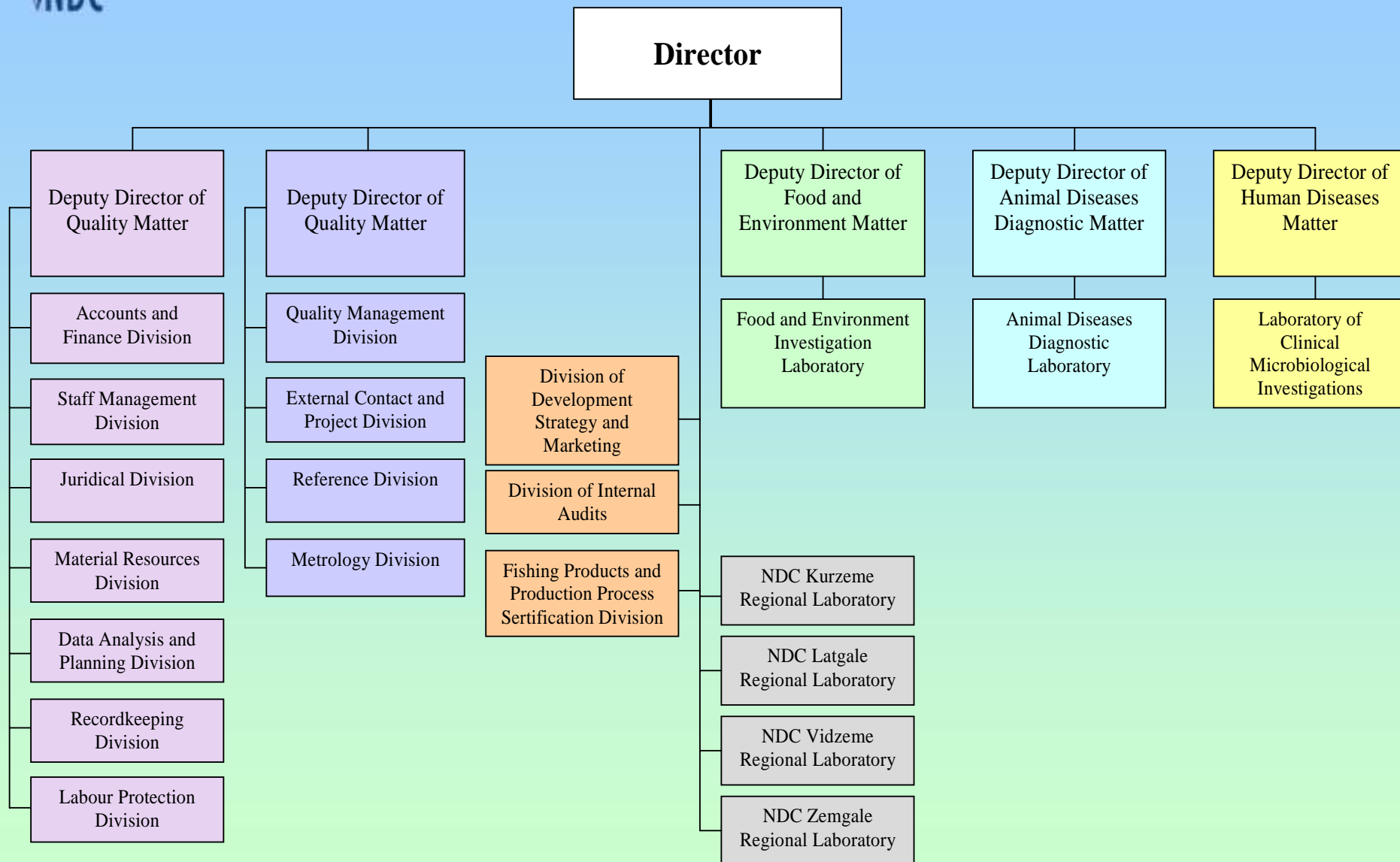


NATIONAL DIAGNOSTIC CENTRE of Food and Veterinary Service

Andra Utinane



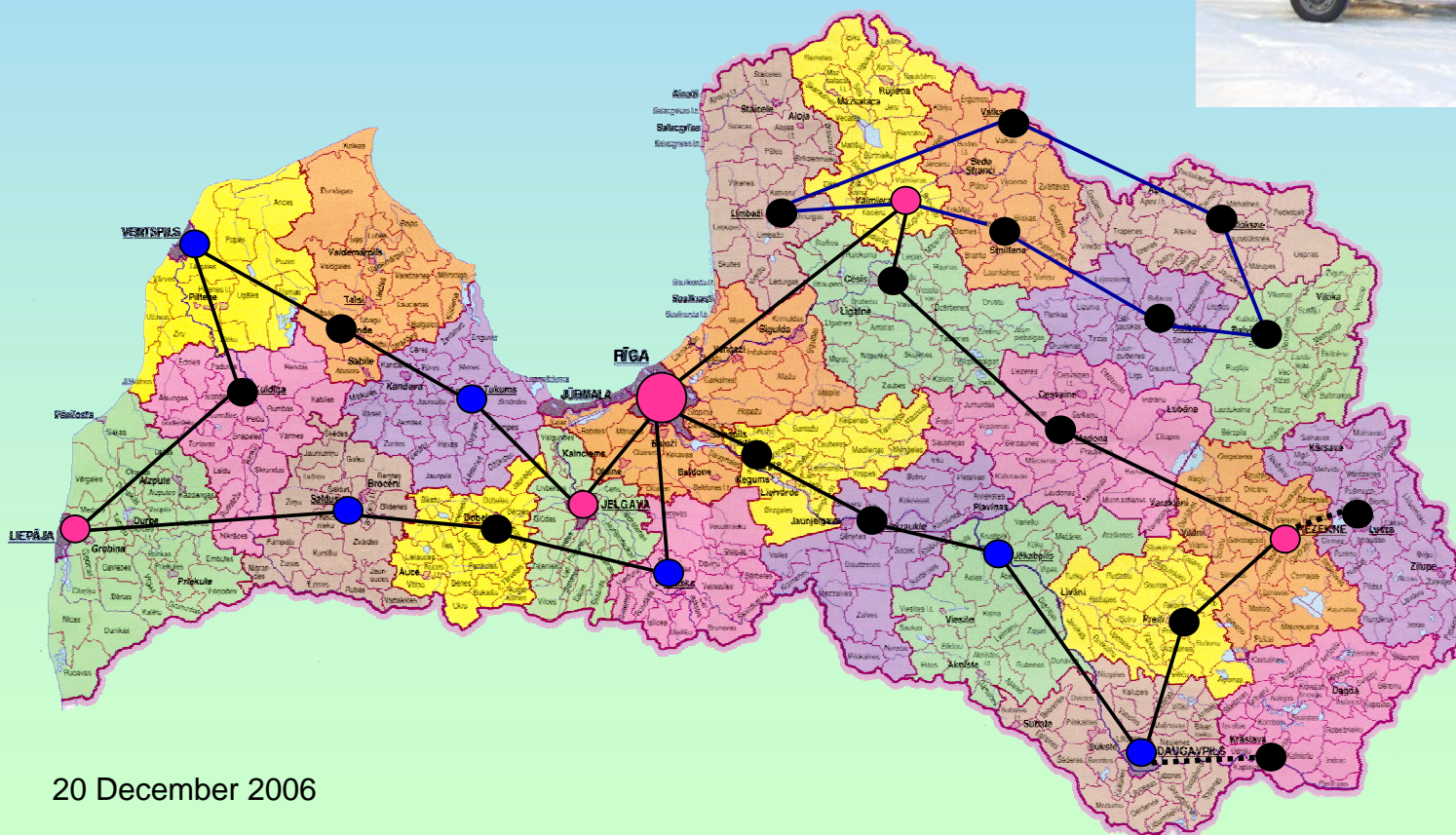
Structure of NDC



Routes of sample transportation

Dedicated transport provides temperature $(+4\pm 2)^{\circ}\text{C}$ and $(-20\pm 2)^{\circ}\text{C}$ during time of transportation and excludes possibility of sample contamination.

Routes of sample transportation covers all territory of Latvia.



Accreditation

- ✓ All laboratories of NDC are accredited by Latvian National Accreditation Bureau (LATAK) according to standard LVS EN ISO/IEC 17025
- ✓ Food and environment investigations laboratory of NDC is also accredited at German Accreditation System (DAP) and Russian Accreditation System (Rostest)

Detection of Escherichia coli

- **Food samples:**
 - Microbiology – General guidance for the enumeration of presumptive Escherichia coli – Most probable number technique
- **ISO 7251:2005**
- **Animal disease**
 - OIE Manual guidance
 - Clinical Veterinary microbiology guidance
- **Detection of VTEC:**
 - I step: detection and identification of E.coli
 - II step: serotyping slide agglutination
 - III step: presence of VT genes with PCR (from 2006)

Animal disease and food control 2005

	Animals/Units tested	Escherichia coli	O157	O157:H7
Cattle	44	22	1	0
Pigs	45	27	0	0
Solipeds	3	1	0	0
Poultry	143	12	0	0
Pet animal	29	7	0	0
Fur animal	49	13	0	0
Other animals	9	2	0	0
Bovine meat	1230	343	0	0
Minced bovine meat	95	17	0	0
Wild game meat	30	48	0	0
Poultry meat	375	220	1	0
Raw milk	45	12	2	0



E.coli serotype 2005

Serotype	Pigs	Cattle	Fur animal	Poultry	Pet animal	Food
O26	1	1			3	363
O44	2					1
O55					1	
O86	2					
O103		2				252
O111					1	49
O114	4	1	2	2		
O119			1			
O125	2	2		1		
O126	8		1			
O127	1	1	1	1	4	
O128	7	3	1		3	
O142	2				1	
O145				1	1	60
O157:K-		1				3
O158	20 December 2006	1			1	7



Thank you for your attention!