



voedsel en waren autoriteit

NRL – *E. coli* The Netherlands

Annet Heuvelink and Enne de Boer

Food and Consumer Product Safety Authority (VWA)

Zutphen, The Netherlands



Food and Consumer Product Safety Authority (VWA)

The Food and Consumer Product Safety Authority is an independent agency in the Ministry of Agriculture, Nature and Food Quality (LNV)

The Authority is responsible for the inspection and supervision of food, non-food, animal health and animal welfare.





STEC – source identification

source identification in cases and outbreaks of STEC infection
-transmission by infected animals-

Epidemiol. Infect. (2002), **129**, 295–302. © 2002 Cambridge University Press
DOI: 10.1017/S095026880200732X Printed in the United Kingdom

***Escherichia coli* O157 infection associated with a petting zoo**

A. E. HEUVELINK^{1*}, C. VAN HEERWAARDEN¹, J. T. M. ZWARTKRUIS-
NAHUIS¹, R. VAN OOSTEROM², K. EDINK³, Y. T. H. P. VAN DUYNHOVEN⁴
AND E. DE BOER¹

¹ *Inspectorate for Health Protection and Veterinary Public Health, PO Box 202, 7200 AE, Zutphen, The Netherlands*

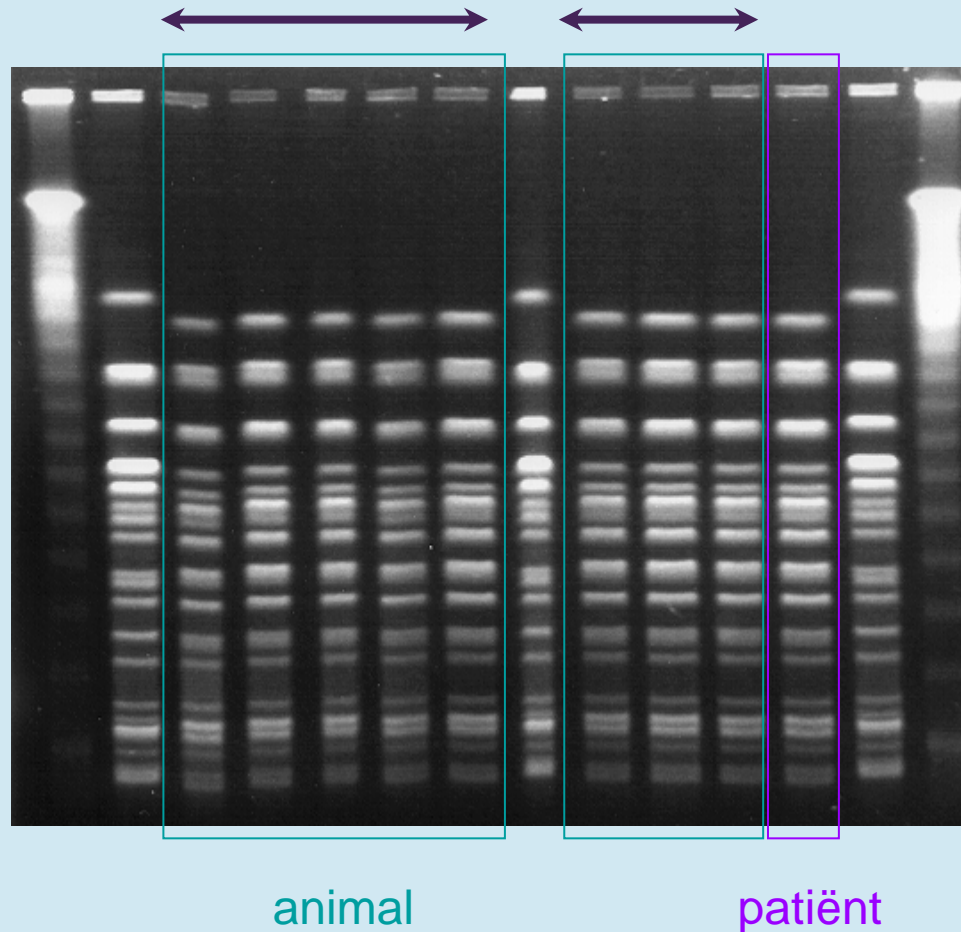
² *Inspectorate for Health Protection and Veterinary Public Health, Hoogte Kadijk 401, 1018 BK Amsterdam, The Netherlands*

³ *Municipal Health Service Gooi en Vechtstreek, PO Box 251, 1400 AG Bussum, The Netherlands*

⁴ *National Institute of Public Health and the Environment, Bilthoven, The Netherlands*



STEC 0157 – source identification





STEC - transmission

source identification in cases and outbreaks of STEC infection
-transmission by infected animals-



ELSEVIER

STEC transmission

International Journal of Food Microbiology 66 (2001) 13–20

INTERNATIONAL JOURNAL OF
Food Microbiology

www.elsevier.nl/locate/ijfoodmicro

Zero-tolerance for faecal contamination of carcasses as a tool in the control of O157 VTEC infections

Annet E. Heuvelink^{*}, Gerard L. Roessink, Koos Bosboom, Enne de Boer

Inspectorate for Health Protection, P.O. Box 202, 7200 AE Zutphen, Netherlands



STEC - transmission

source identification in cases and outbreaks of STEC infection
-transmission by contaminated foods-

Outbreak report

Eurosurveillance monthly release	Shiga toxin-producing Escherichia coli (STEC) O157 outbreak, The Netherlands, September – October 2005	volume	11
		issue	7-8
		publication date	July / August 2006

Y Doorduyn¹, CM de Jager¹, WK van der Zwaluw², IHM Friesema¹, AE Heuvelink³, E de Boer³, WJB Wannet², YTHP van Duynhoven¹

1. Centre for Infectious Diseases Epidemiology, National Institute for Public Health and the Environment, Bilthoven, The Netherlands
2. Diagnostic Laboratory for Infectious Diseases Diagnosis and Perinatal Screening, National Institute for Public Health and the Environment, Bilthoven, The Netherlands
3. Food and Consumer Product Safety Authority, Zutphen, The Netherlands



STEC - surveillance

Surveillance and monitoring of STEC in foods

CHAPTER 9

FOODS AS VEHICLES OF VTEC INFECTION

ENNE DE BOER

and

ANNET E. HEUVELINK

Inspectorate for Health Protection

P.O. Box 202

7200 AE Zutphen

The Netherlands

In: 'Verocytotoxigenic E. coli' G. Duffy et al (2001)



STEC - methodology

detection and characterization of STEC



ELSEVIER

Available online at www.sciencedirect.com

SCIENCE @ DIRECT®

International Journal of Food Microbiology 109 (2006) 151–156

INTERNATIONAL JOURNAL OF
Food Microbiology

www.elsevier.com/locate/ijfoodmicro

Short communication

Immunoconcentration of Shiga toxin-producing *Escherichia coli* O157 from animal faeces and raw meats by using Dynabeads anti-*E. coli* O157 and the VIDAS system

M. Aminul Islam ^{a,b}, Annet E. Heuvelink ^{a,*}, Kaiser A. Talukder ^b, Enne de Boer ^a

^a Food and Consumer Product Safety Authority, PO Box 202, 7200 AE Zutphen, The Netherlands

^b Enteric Microbiology Laboratory, ICDDR, B: Centre for Health and Population Research, GPO Box-128, Dhaka-1000, Bangladesh

Received 28 April 2005; received in revised form 28 September 2005; accepted 7 January 2006



NRL – *E. coli* The Netherlands

Annet Heuvelink

Amin Islam (ICCCR,B)

Enne de Boer

