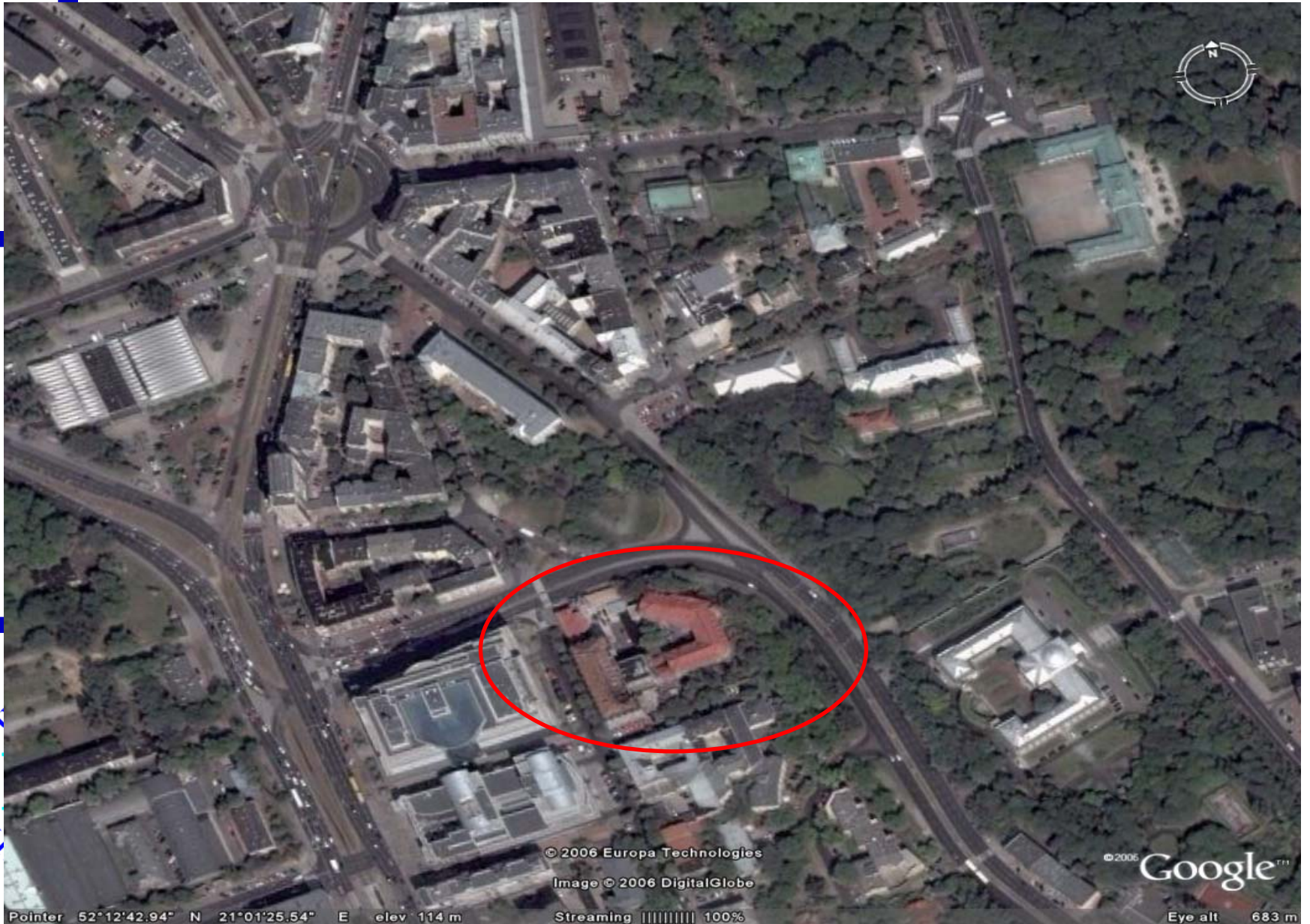




**REFERENCE LABORATORY
FOR *ESCHERICHIA COLI* FOR FOOD OF
PLANT ORIGIN**

**LABORATORY OF DEPARTMENT OF
FOOD AND CONSUMER ARTICLES
RESEARCH**

**NATIONAL INSTITUTE OF HYGIENE
WARSAW**



© 2006 Europa Technologies

Image © 2006 DigitalGlobe

© 2006 Google™

Pointer 52°12'42.94" N 21°01'25.54" E elev 114 m

Streaming ||||| 100%

Eye alt 683 m

STATI • PR

LABORATORY OF THE DEPARTMENT OF FOOD AND CONSUMER ARTICLES RESEARCH



Laboratories:

- Food Toxicology
- Food Contact Materials and Articles
- Food Chemical Contaminants
- Food Additives
- Food Hygiene
- **Food Microbiology**



LABORATORY OF THE DEPARTMENT OF FOOD AND CONSUMER ARTICLES RESEARCH

QUALITY SYSTEM

according to PN-EN /IEC 17025:2001 / App.1:2003

ACCREDITATION CERTIFICATE OF TESTING LABORATORY

No AB 509

Issued by: POLISH CENTRE FOR ACCREDITATION

EA MLA Signatory



LABORATORY OF FOOD MICROBIOLOGY



ACCREDITATION has been obtained for testing in
food:
presence and count of pathogenic and indicative
bacteria



LABORATORY OF FOOD MICROBIOLOGY



- participation in interlaboratory proficiency tests organized by:
 - Central Science Laboratory (UK):
FEPAS programmes;
 - Polish Centre for Accreditation (**PCA**)



LABORATORY OF FOOD MICROBIOLOGY

ACTIVITIES AS A STATE REFERENCE LABORATORY



- providing scientific background over activities of State Sanitary Inspection laboratories
- providing training for State Sanitary Inspection laboratories
- organizing of proficiency tests for State Sanitary Inspection laboratories



ACTIVITIES AS A STATE REFERENCE LABORATORY



- providing scientific and technical assistance to the competent authority – State Sanitary Inspectorate – for the implementation of coordinated control plans
- providing scientific and technical assistance to the competent authority – State Sanitary Inspectorate – in planning and assessment of monitoring tests and data.

PN-EN ISO 16654:2002

SAMPLE (x g or x ml) + 9 x ml mTSB

**Homogenization and incubation for 6 h
and then for 12 – 18 h at temp. 41,5°C**

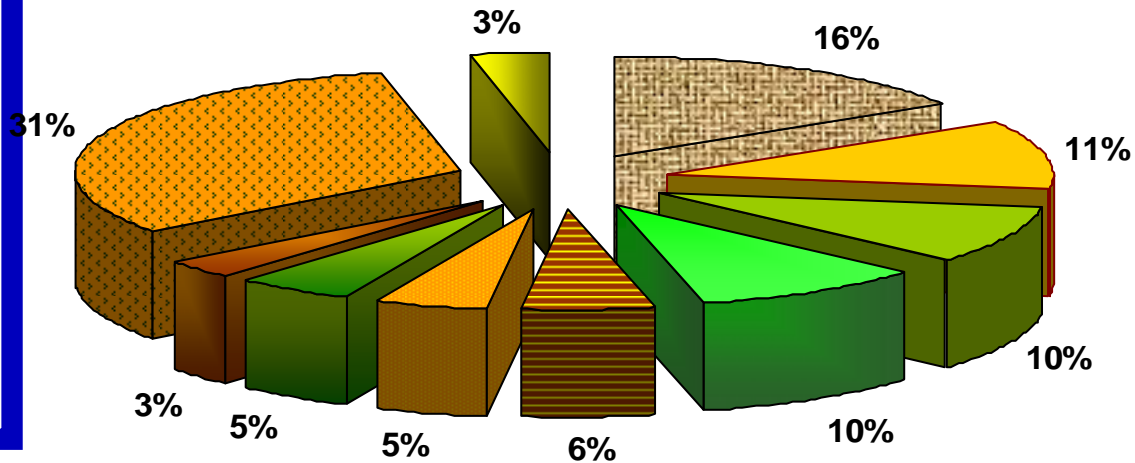
**Immunomagnetic separation
magnetic separator**

**Chromagar O157 and
CT-SMAC**

**Confirmation of
pure colony**



FOOD SAMPLES



- beef meat
- pork meat
- poultry meat
- giblets
- meat products
- raw milk
- milk products
- salads
- sprouts
- juice unpasteurized